

CABERNET 2014: Tailored & Sustainable Redevelopment Towards Zero Brownfields

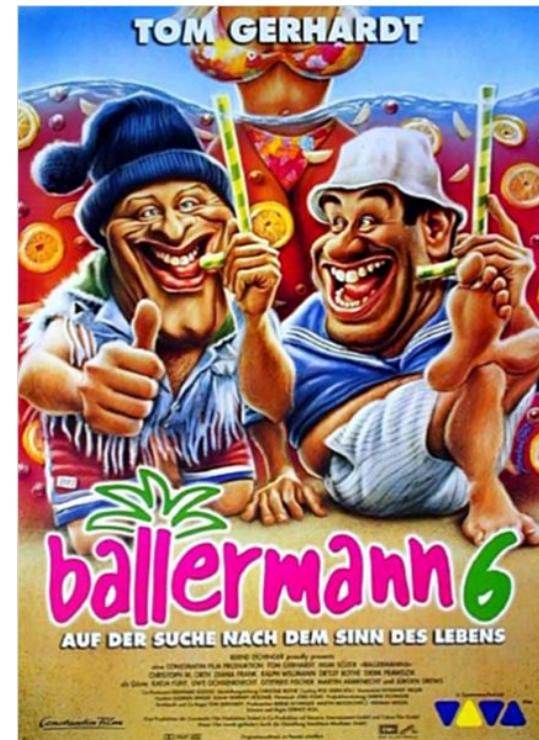
A Local Perspective On
Unlocking Innovative
Transatlantic Cooperation

Frankfurt, Germany
October 15, 2014



In the United States, International Partnerships Viewed Suspiciously – Especially at the Local Level

International work is too often seen as irrelevant or wasteful

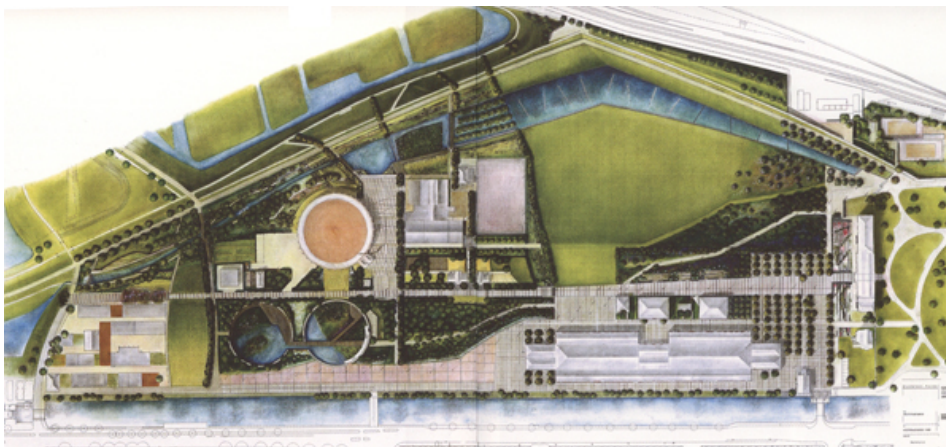


Brownfields Redevelopment Fundamentally About Creativity



“A new poll conducted by the Pew Research Center found that, when asked to provide their immediate reaction to the sound of the word ‘America,’ 98 percent of respondents replied by describing the sight of a near-empty parking lot of a decrepit suburban strip mall on a late February afternoon.” August 22, 2013 The Onion.

International Cooperation Can Be a Driver of Creative Brownfields Redevelopment in the US and Other Cities Around the World



Making International Brownfields Cooperation More Relevant At Local Level

Learning & Exchanges That Are:

- Problem-Focused

- Goal-Oriented

- Geographically-Targeted

Where Policymakers Receive:

- Context of Imported Programs and How they Evolved;

- Quantitative Performance Measures;

- Prospective Analysis About Transfer Possibilities

Resulting in OUTCOMES

Northern Virginia

- 500,000 new residents moving to Northern Virginia by 2020
- One of Fastest Growing Regions in the United States



Problem: Sprawl Development Patterns



Strategically Focused Work with Europe: Based on Trade and Investment Relations

Employment

European* investment in Virginia supported 74,000 jobs in 2008.



©2010 VW.COM



Sources of Employment within Virginia, 2008	
Country	Employment
United Kingdom	28,300
Japan	17,100
Germany	14,000
France	13,200
Netherlands	11,900

***Numbers just for France, Germany, Netherlands, Switzerland and the UK.**

**** Data for jobs related to trade, plus indirect employment effects in terms of suppliers, distributors, makes 200,000 jobs with Europe**

Transferring Innovative Sustainable Policies and Technologies From Europe



ENERGIEAUSWEIS für Nichtwohngebäude
gemäß den §§ 15 ff. Energieeinsparverordnung (EnEV)

Erstellt am: _____ Aushang

Gebäude

Hauptnutzung / Gebäudekategorie		Gebäudefoto (freiwillig)
Adresse		
Gebäudefoto		
Begrünte Gebäude		
Begrünte Wärmepumpe		
Begrünte Wärmepumpe		
Nutzungsfläche		

Primärenergiebedarf „Gesamtenergieeffizienz“

Dieses Gebäude: kWh/(m²·a)

0 100 200 300 400 500 600 700 800 900 1000 >1000

EnEV-Anforderungswert
Neubau

EnEV-Anforderungswert
modernster ABS

Aufteilung Energiebedarf

600
400
300
200
100

Nutzerenergie Endenergie Primärenergie „Gesamtenergieeffizienz“

Beheizung des Gebäudes
Luftung
Eingebrachte Beheizung
Wärmepumpe
Beheizung

Aussteller: _____ Unterschrift des Ausstellers: _____

Making Appropriate Transfers and Applications of Innovations From Europe to Northern Virginia



Making Appropriate Transfers and Applications of Innovations From Europe to Northern Virginia

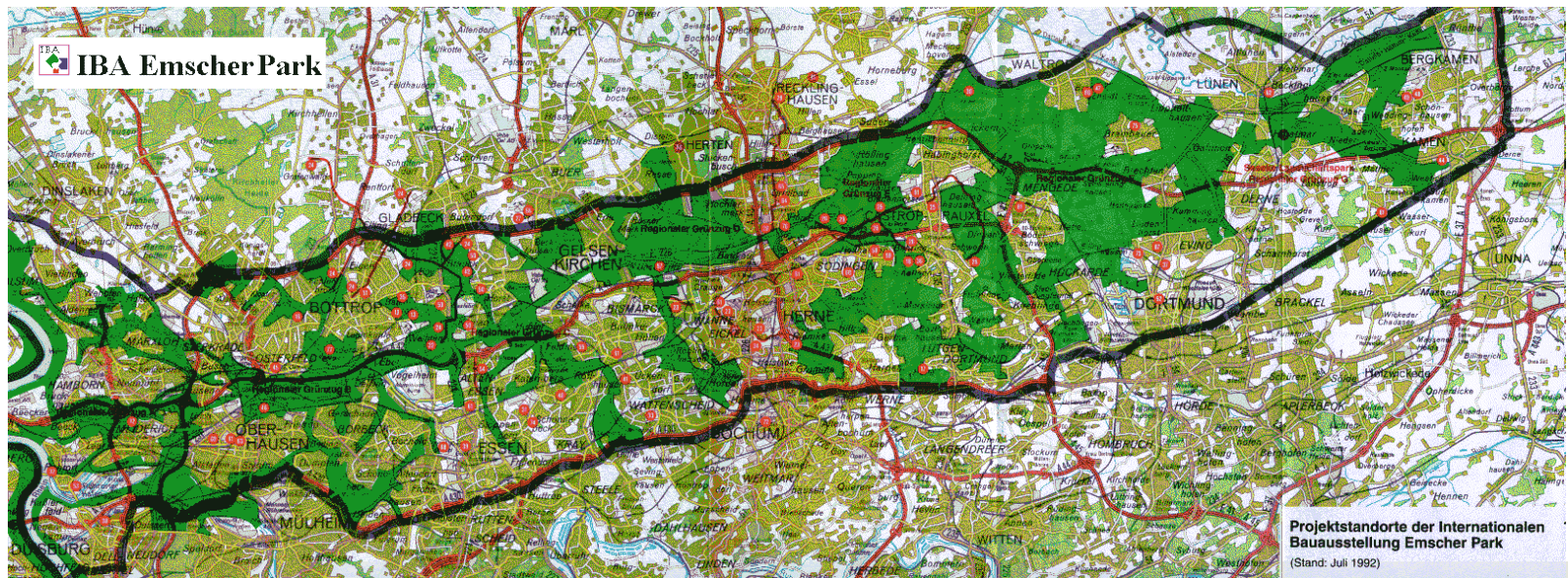


Making Appropriate Transfers and Applications of Innovations From Europe to Northern Virginia



Emscher Park

Green Infrastructure to Connect Heritage and Culture



Transfer of Green Infrastructure Lessons From Europe to Northern Virginia



Transfer of Green Infrastructure Lessons From Europe to Northern Virginia



Transferring Green Infrastructure Lessons From Europe to Northern Virginia



Transfer of Green Infrastructure Lessons From Europe to Northern Virginia



Transfer of Light Rail Lessons From Europe to Northern Virginia



Transfer of Light Rail Lessons From Europe to Northern Virginia



The Applications: Buffalo



Buffalo



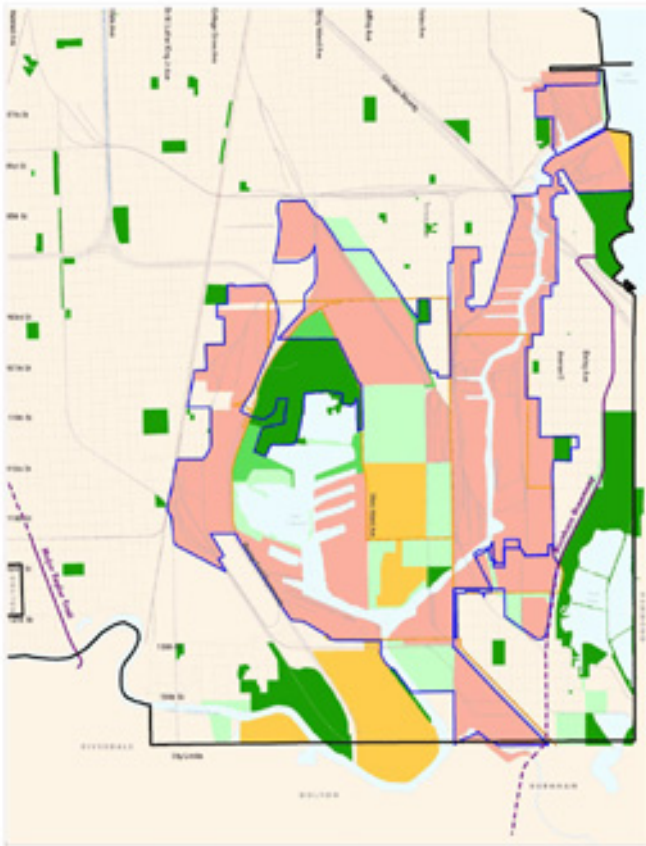
Industrial Heritage Potential in Buffalo?



Applying Brownfields Lessons From Europe to Greenpoint - Williamsburg



Chicago – Lake Calumet



“It ought to be remembered that there is nothing more difficult to take in hand, more perilous to conduct, or more uncertain in its success, than to take the lead in the introduction of a new order of things.”

Niccolo Machiavelli

Thanks!

Dale Medearis, Ph.D

Northern Virginia Regional Commission

dmedearis@novaregion.org